



GS1 Standards for Cash Handling



GS1 System

The GS1 System is an integrated system of global standards for identification and communication purposes. It provides information regarding products, assets, services and locations. It is the most implemented supply chain standards system in the world and the basis for a wide range of efficient supply chain applications and solutions. GS1 has local offices in over 100 countries worldwide. Together with the GS1 Global Office in Brussels GS1 serves about 1.2 million companies in over 150 countries.

Benefits of GS1 Standards in the cash cycle

The cash cycle consists of various processes for ordering, receipt and delivery of notes and coins. It includes a lot of different cash handlers asking for highly secure and reliable business transactions.

The usage of the GS1 Standards improves the efficiency, the security and the transparency of all relevant cash handling processes.

In this context GS1's global, multi-sector standards contribute to:

- increasing the reliability of the physical tracking of cash units
- optimising and standardising the message flow between professional cash handlers
- eliminating duplicate inputs
- saving time in preparation, shipping and receiving
- improving traceability and thereby contributing to customer safety
- increasing reliability and optimising inventories
- improving the quality of service
- enabling the automatic recording of data to ensure the quality of information.



Participants in the cash cycle

The GS1 System supports the whole cash cycle and lead to benefits for professional cash handlers, such as

- National Central Banks (NCB), mints and printing works
- Banks
- CIT companies (cash in transit)
- Commercial enterprises

Improvement in cash processes

The ordering and depositing process of cash can be eased substantially by the GS1 based message transfer:

Electronic Ordering of Cash:

The Electronic Cash Order is transferred to the NCB. After preparation of the withdrawal the NCB can send a Notification of Delivery that contains information about the prepared cash units according to the order. With the Confirmation of Delivery the NCB informs its customer about the delivery of the cash.

Electronic Notification of Inpayment:

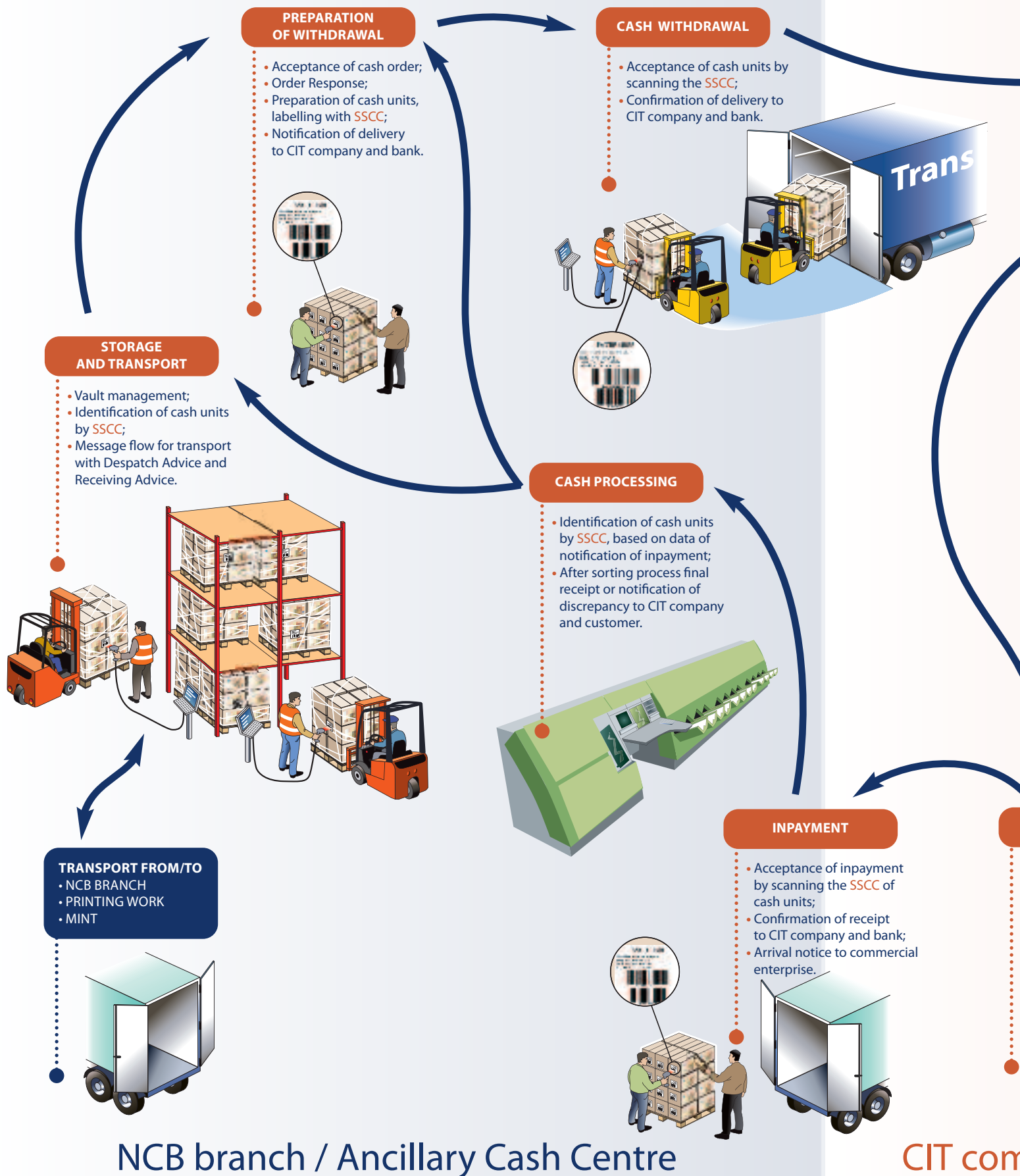
The Customer can announce its deposit of cash electronically to the NCB prior to the physical delivery with a Notification of Inpayment. Having taken in the cash units, the NCB answers this message with a Confirmation of Receipt. After reconciliation of the deposit the NCB informs the customer about the accurate counting results (Final receipt) or alternatively send a Notification of Discrepancy to him.

Because of the messages' neutral design the data flow is not limited to central bank operations but can be performed between every professional cash handler.



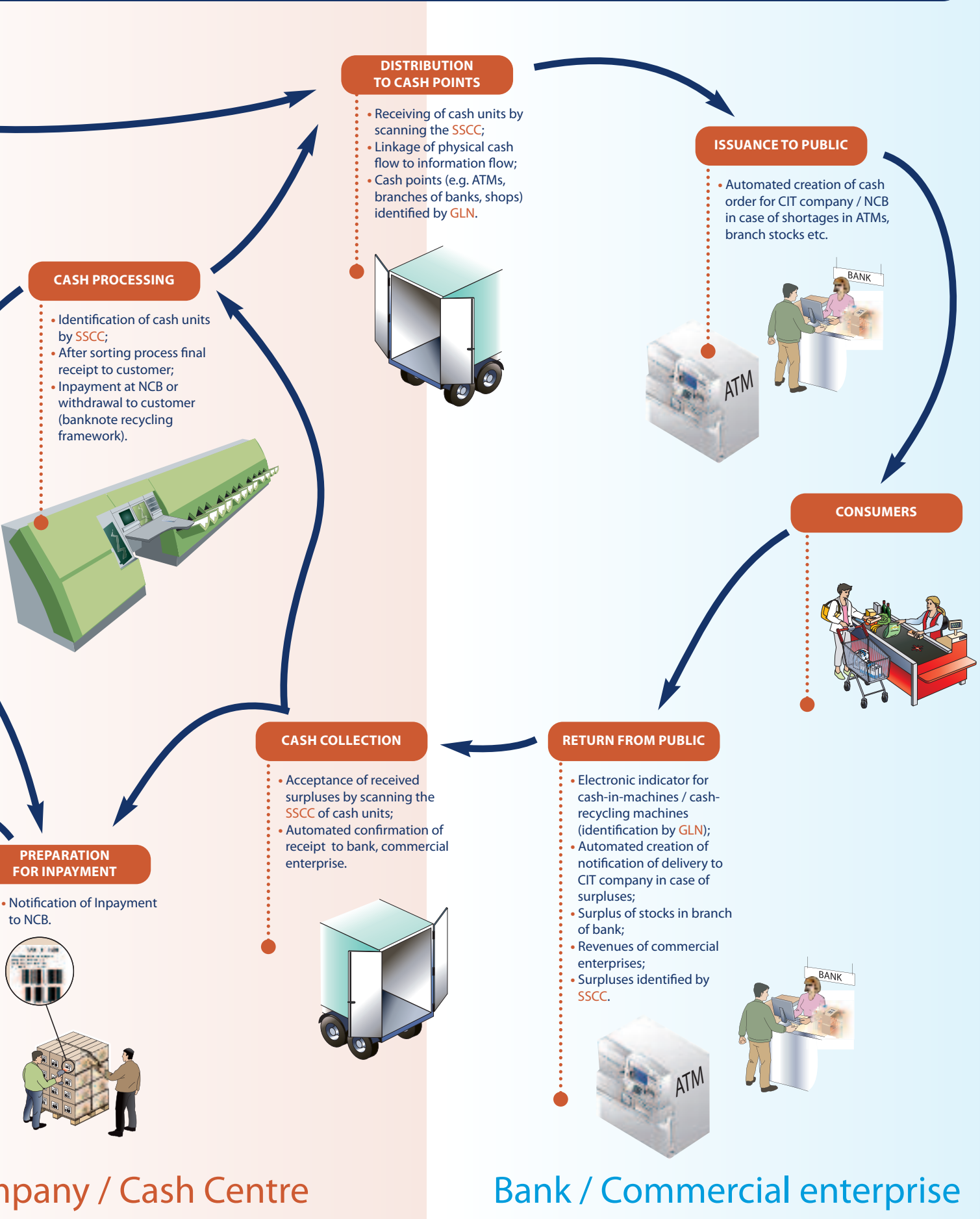
General Overview on the Cash

(Exemplary description: Depending on the national cash cycle additional message types c



Handling Processes

can be used and professional cash handlers might play a different role.)



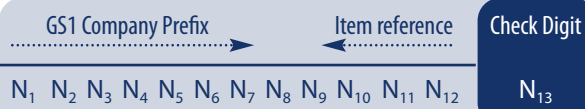
Company / Cash Centre

Bank / Commercial enterprise

GS1 Identification keys

GTIN (Global Trade Item Number)

Identification number of 13 digits for products and services. The **GTIN** is normally constructed from a GS1 company prefix assigned to a company, an item reference designated by the company and a check digit.



GLN (Global Location Number)

13-digit number that identifies uniquely any physical or legal location or party involved in a given transaction.

SSCC (Serial Shipping Container Code)

18-digit number that uniquely identifies a logistic unit and provides an efficient way to facilitate automated dispatch, delivery and good-in processes. The SSCC is used to manage storage and shipping of logistic units. To accelerate the identification processes the SSCC is typically expressed in a bar code GS1-128 or can be also encoded into a RFID tag as per the EPC format (Electronic Product Code).

Relevance for cash cycle

GTINs are assigned by the ECB or NCB to banknotes and coins in different status, such as denomination, series, condition or packaging detail. **GTINs** may also be used for the identification of special services.

The **GLN** identifies professional cash handlers involved in the cash cycle. For tracking and tracing purposes **GLNs** can be related to ATMs, cash points or cash processing systems.

In order to clearly identify cash units they are given a **SSCC**. This number enables to track the cash on the way to the scheduled destination (NCB branch, ancillary cash centres of the CIT company or bank etc.).

Communication via standardised message types

Several NCBs of the Eurosystem decided on using the above mentioned GS1 identification keys and standard message types of GS1 XML in their national cash cycles. The main messages used for cash transactions are:

- *"Multi Shipment Order"* for Cash Order
- *"Order Response"* for Cash Order Response
- *"Despatch Advice"* for Notification of Delivery, Confirmation of Delivery and Notification of Inpayment
- *"Receiving Advice"* for Confirmation of Receipt, Arrival Notice and Final Receipt
- *"Application Receipt Acknowledgement"* for Application Handling Message.

Furthermore the GS1 standards were accepted in the Eurosystem as one standard for cross-border cash operations.

Contact GS1 in Europe locally:

GS1 Albania

+355 4 232073
info@gs1al.org
www.gs1al.org

GS1 Armenia

+374 10 272 622
gs1arm@am.org
www.gs1am.org

GS1 Austria

+43 1 505 86 01
office@gs1austria.at
www.gs1austria.at

GS1 Azerbaijan

+99412 4987405
ean@gs1az.org
www.gs1az.org

GS1 Belarus

+ 375 17 298 09 13
ean@ean.by
www.ean.by

GS1 Belgium & Luxembourg

+32 2 229 18 80
info@gs1belu.org
www.gs1belu.org

GS1 Bosnia-Herzegovina

+387 33 258 646
info@gs1bih.com
www.gs1bih.com

GS1 Bulgaria

+359 2 988 3139
gs1bulgaria@gs1bg.org
www.gs1bg.org

GS1 Croatia

+385 1 48 95 000
info@gs1hr.org
www.gs1hr.org

GS1 Cyprus

+357 2 889800
info@gs1cy.org
www.gs1cy.org

GS1 Czech Republic

+ 420 234 633145
info@gs1cz.org
www.gs1cz.org

GS1 Denmark

+45 39 27 85 27
info@gs1.dk
www.gs1.dk

GS1 Estonia

+372 660 5535
info@gs1.ee
www.gs1.ee

GS1 Finland

+358 9 4242 6280
asiakaspalvelu@gs1.fi
www.gs1.fi

GS1 France

+33 1 409 554 10
infos@gs1fr.org
www.gs1.fr

GS1 Georgia

+995 32 29 4724
info@gs1ge.org
www.gs1ge.org

GS1 Germany

+49 221 947 14 - 0
info@gs1-germany.de
www.gs1-germany.de

GS1 Hungary

+36 1 412 3954
info@gs1hu.org
www.gs1hu.org

GS1 Iceland

+ 354 511 3011
info@gs1.is
www.gs1.is

GS1 Ireland

+353 1 208 0660
info@gs1ie.org
www.gs1.ie

GS1 Israel

+972 3 519 88 39
info@gs1il.org
www.gs1il.org

GS1 Italy

+39 02 777 2121
info@indicod-ecr.it
www.indicod-ecr.it

GS1 Kazakstan

+7 3272 756578
+7 7272 479348
info@gs1.kz
www.gs1.kz

GS1 Kyrgyzstan

+996 312 51 0826
info@gs1kg.org
www.gs1kg.org

GS1 Latvia

+ 371 67830 822
gs1@gs1lv.org • gs1@gs1.lv
www.gs1lv.org • www.gs1.lv

GS1 Lithuania

+370 5 2614532
gs1@gs1lt.org
www.gs1lt.org

GS1 Macedonia

+389 2 32 54 250
gs1mk@gs1mk.org.mk
www.gs1mk.org.mk

GS1 Moldova

+373 22 24 1669
info@gs1md.org
www.gs1md.org

GS1 Netherlands

+31 20 511 3820
info@gs1.nl
www.gs1.nl

GS1 Norway

+47 22 97 13 20
firmapost@gs1.no
www.gs1.no

GS1 Poland

+48 61 8504977
gs1pl@gs1.pl.org
www.gs1pl.org

GS1 Portugal

+35 1 21 752 07 40
info@gs1pt.org
www.gs1pt.org

GS1 Romania

+40 21 3178031
office@gs1.ro
www.gs1.ro

GS1 Russia

+7 495 730 7103
info@gs1ru.org
www.gs1ru.org

GS1 Serbia

+381 11 3132 312
office@gs1yu.org
www.gs1yu.org

GS1 Slovakia

+421 41 565 11 85
info@gs1sk.org
www.gs1sk.org

GS1 Slovenia

+386 1 5898320
info@gs1si.org
www.gs1si.org

GS1 South Africa

+27 11 789 5777
info@gs1za.org
www.gs1za.org

GS1 Spain

+34 93 252 39 00
info@gs1es.org
www.gs1es.org

GS1 Sweden

+46 8 50 10 10 00
info@gs1.se
www.gs1.se

GS1 Switzerland

+41(0)58 800 70 00
mail@gs1.ch
www.gs1.ch

GS1 Turkey

+90 312 218 20 00
gs1turkey@tobb.org.tr
www.gs1tr.org

GS1 UK

+44 20 7092 3500
info@gs1uk.org
www.gs1uk.org

GS1 Ukraine

+380 44 486 0734
ean@gs1ua.org
www.gs1ua.org

GS1 Uzbekistan

+998 71 252 6604
info@gs1uz.org
www.gs1uz.org

GS1 in Europe is a collaboration of 45 GS1 member organisations. We lead the creation and implementation of harmonised, user-driven solutions for improving the supply and demand chain of European companies.



One world. One system. One global language of business.



in Europe

T +36 1 412 3947

E david.ketszeri@gs1eu.org

www.gs1.eu

With special thanks to GS1 France – Patricia Perrier, Technical Executive
and GS1 Germany – Chris Przybilla, Senior Project Manager eBusiness